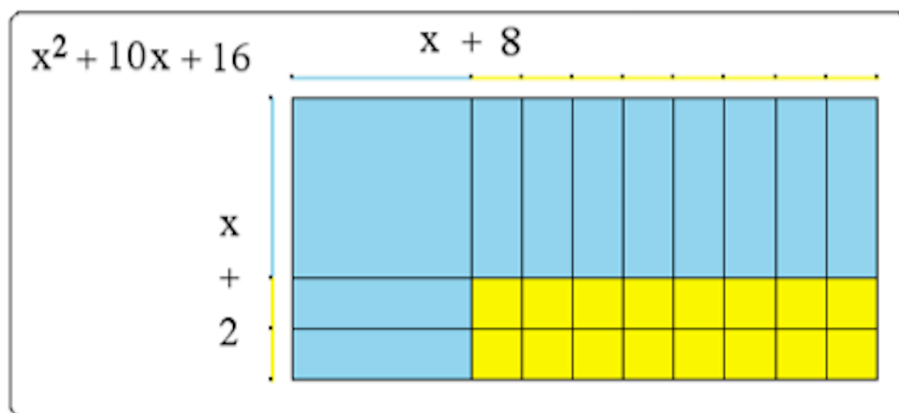
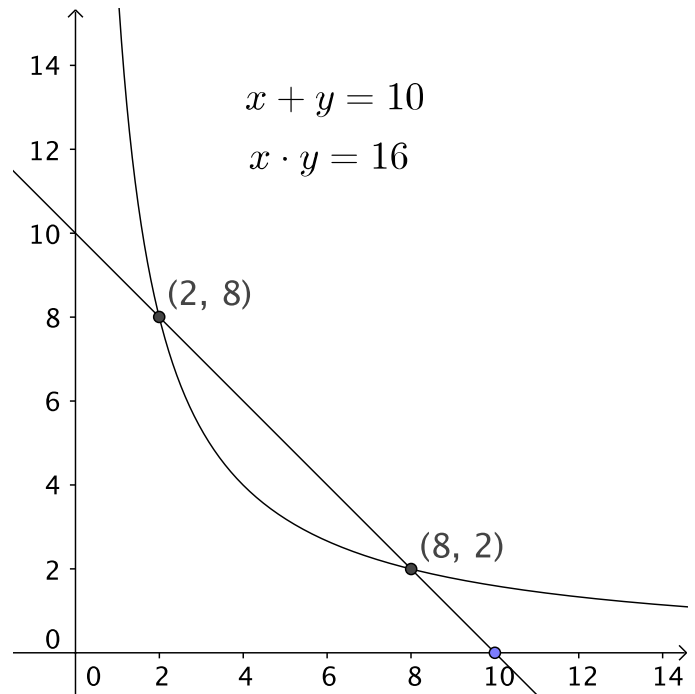
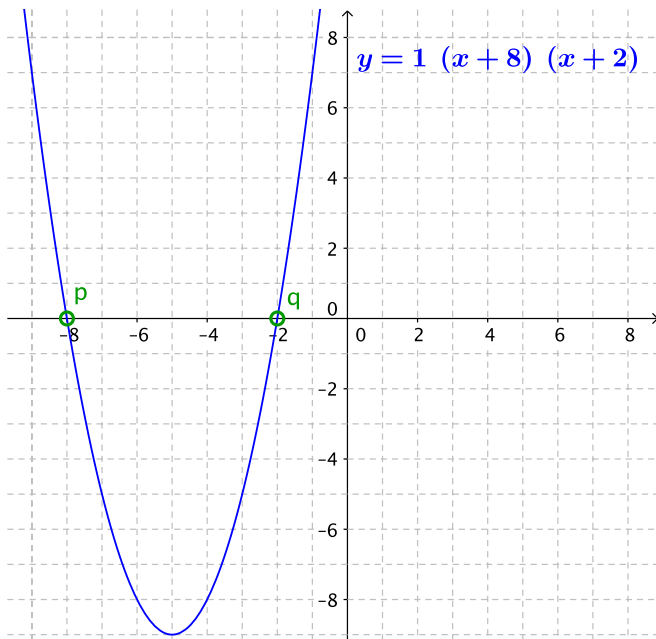


Five Representations

Explain the connections between these representations of the same trinomial.

	x	+2
x	x ²	+2x
+8	+8x	+16

$$y = (x + 2)(x + 8) = x^2 + 10x + 16$$



To make images for your own $x^2 + bx + c$ trinomial, go to:
<http://www.mathedpage.org/parabolas/connections/>
 (and scroll down)